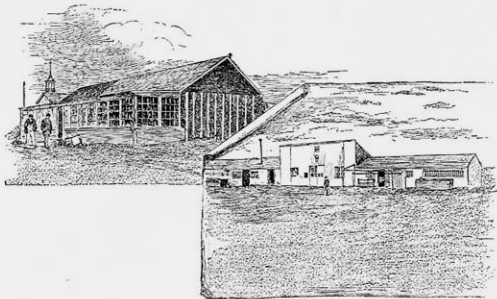




ALUCULOOF INDIANS.





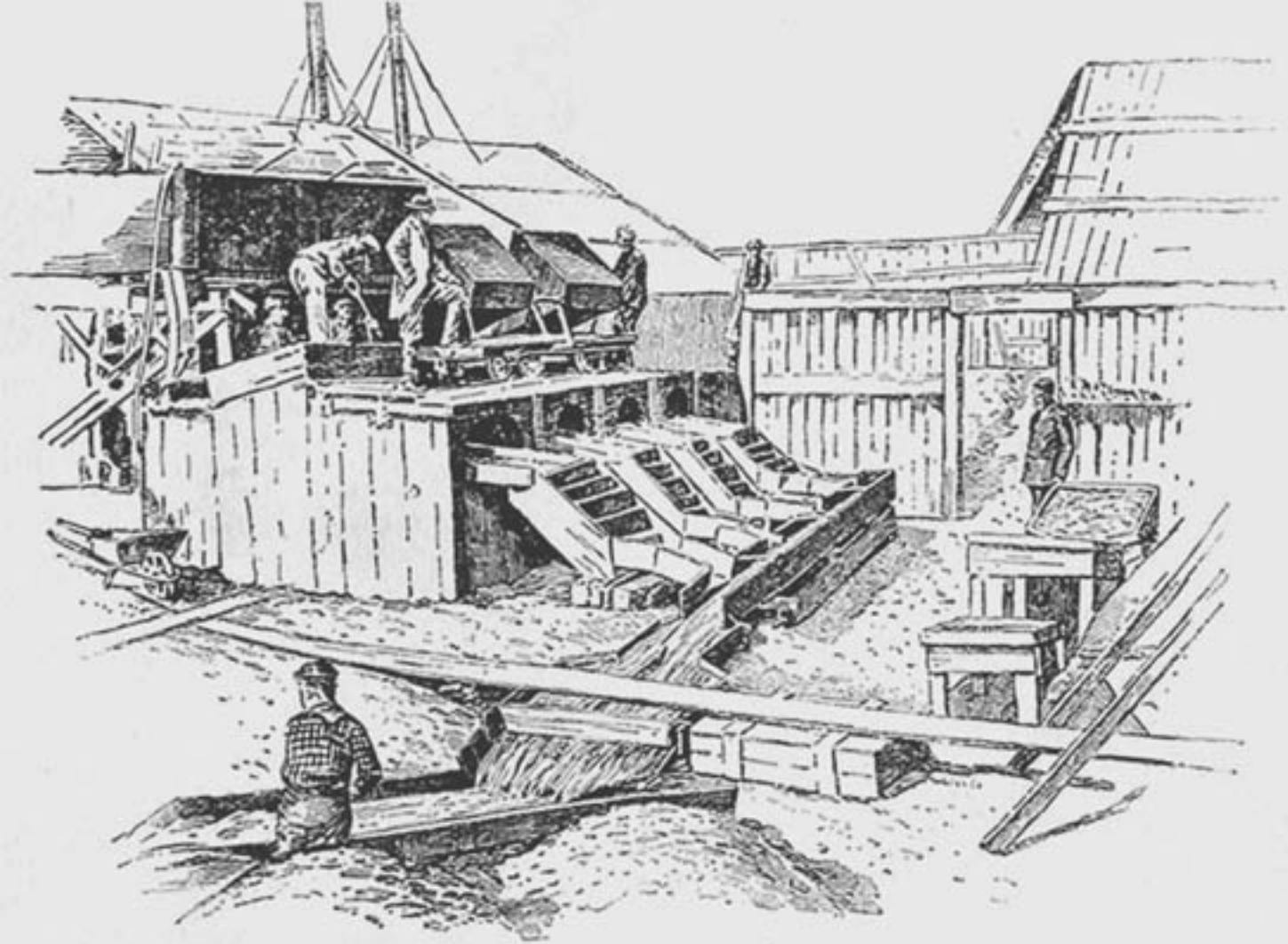
THE GOVERNOR'S HOME AND A BUSINESS BLOCK IN GALLEGOS, THE CAPITAL OF PATAGONIA.



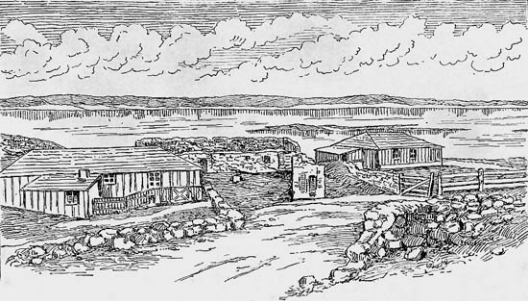
GAUCHOS AT HOME.



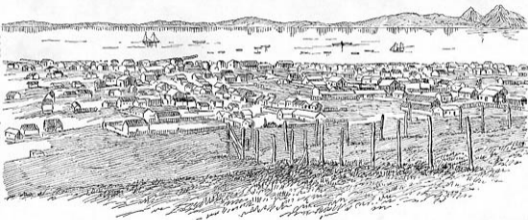
AN ONA FAMILY.



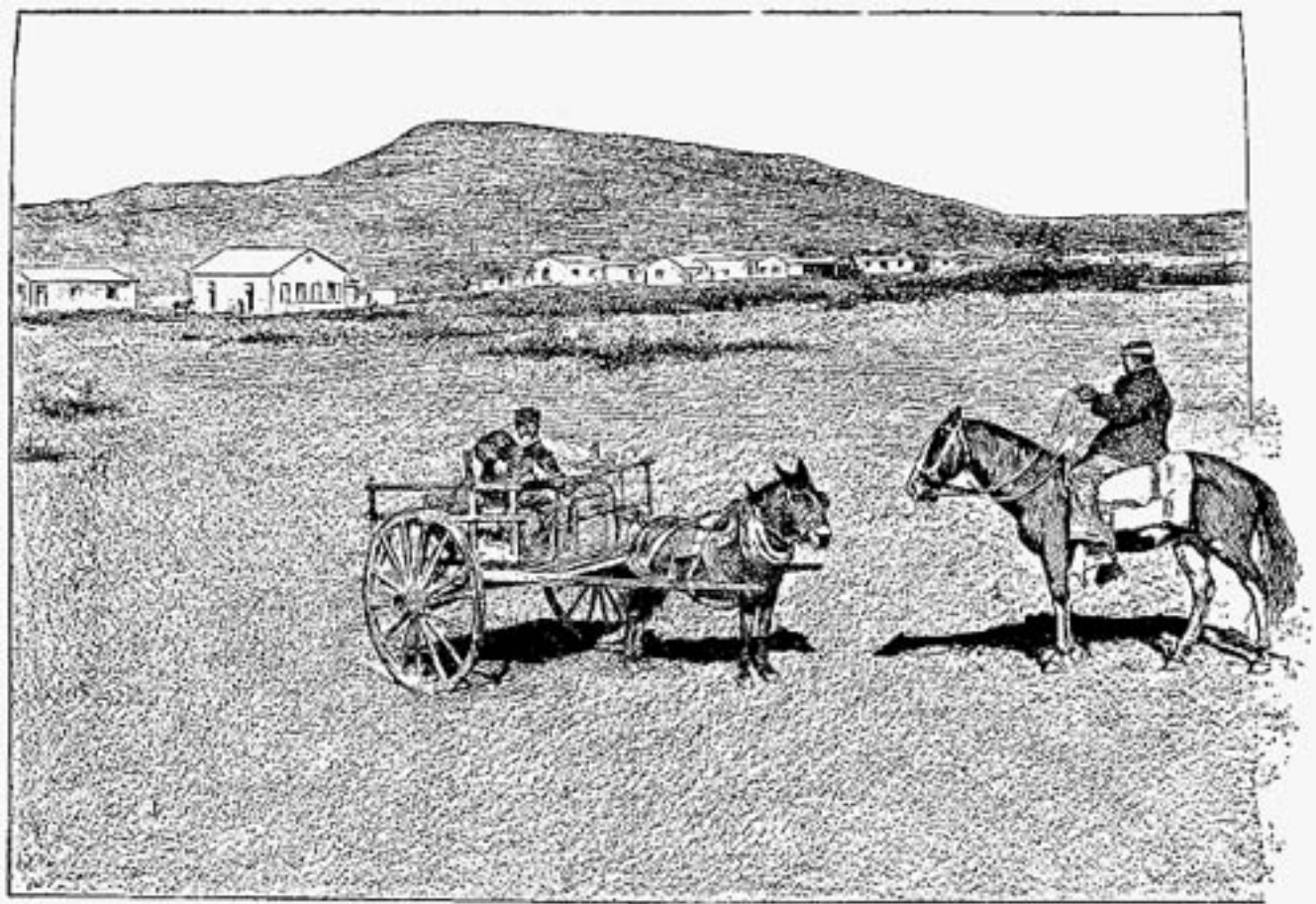
GOLD-WASHING MACHINES. PARAMO, TIERRA DEL FUEGO

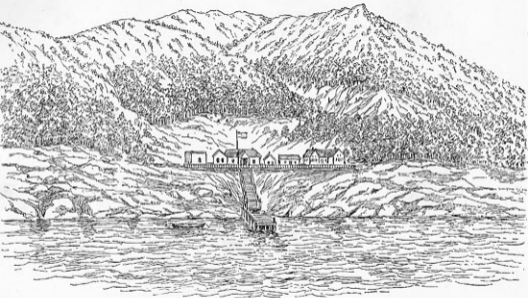


AMONG THE RUINS AT PORT DESIRE, PATAGONIA.

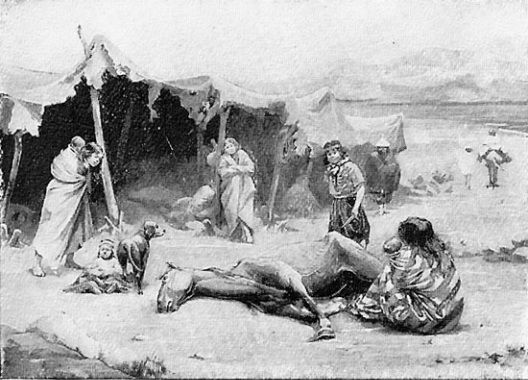


PUNTA ARENAS, STRAIT OF MAGELLAN.





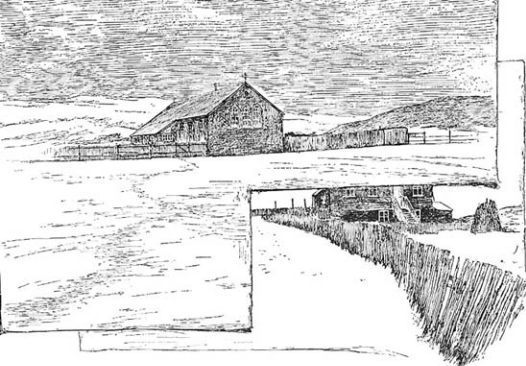
GOVERNMENT STATION AT ST. JOHN.
FROM A SKETCH BY COMMANDER CHWITES, A. N.



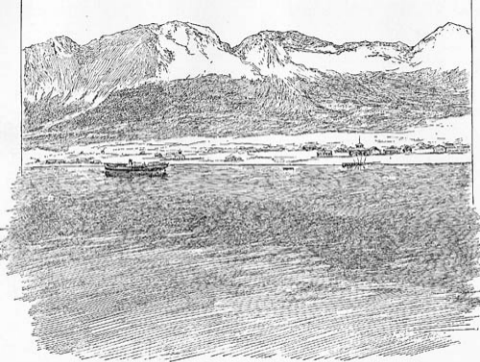
TEHUELCHES IN CAMP.



A TEHUELCHÉ SQUAW.



THE MISSION STATION AT USHUAIA.



USHUAIA, THE CAPITAL OF ARGENTINE TIERRA DEL FUEGO.



YAHGANS AT HOME.